



THE COLLEGE OF
OPTOMETRISTS

Stage Two

Overarching case scenario 13

AGE AND GENDER 4 years old, male

ETHNIC BACKGROUND Asian

OCCUPATION AND HOBBIES Attends nursery school, 3 days per week

PRESENTING SYMPTOMS AND HISTORY Mum wants checked as elders sibling (brother, age 8) has spectacles for longsightedness, and cousin has a squint. No symptoms reported, first sight test.

GENERAL HEALTH AND MEDICATION Ventolin and Becotide inhalers for asthma, for past 3 months.

PRESENT Rx, CENTRATION AND ACUITIES No previous Rx.

PD/NCD 55 / 53mm

VISION RE VA 3/4.5, LE VA 3/4.5, by Sheridan Gardiner test

PINHOLE VISION not tested

REFRACTION

RE +2.50. VA 3/4.5

LE +2.00 VA 3/ 4.5

With 0.5% Cyclopentolate HCl, after 40 minutes

RE +3.00DS

LE +2.50DS

VA Distance RE 3/4.5, LE 3/4.5, by Sheridan Gardiner test

Near Can identify 'house' on budgie stick, monocularly at 20cm

ACCOMMODATION RE 12 LE 12

BINOCULAR STATUS Titmus stereo-test. 100" (animals)

Cover Test DV without Rx 2 prism esophoria; with Rx orthophoria

Cover Test NV without Rx 10 prism esophoria, good recovery (letter target); with Rx 4 prism esophoria

MOTILITY Full and smooth in all directions

CONVERGENCE 5cm

PUPIL REACTIONS PERRLA

FUNDUS EXAMINATION See attached photo

FIELDS Gross arc perimetry with 10/300R full right and left eyes

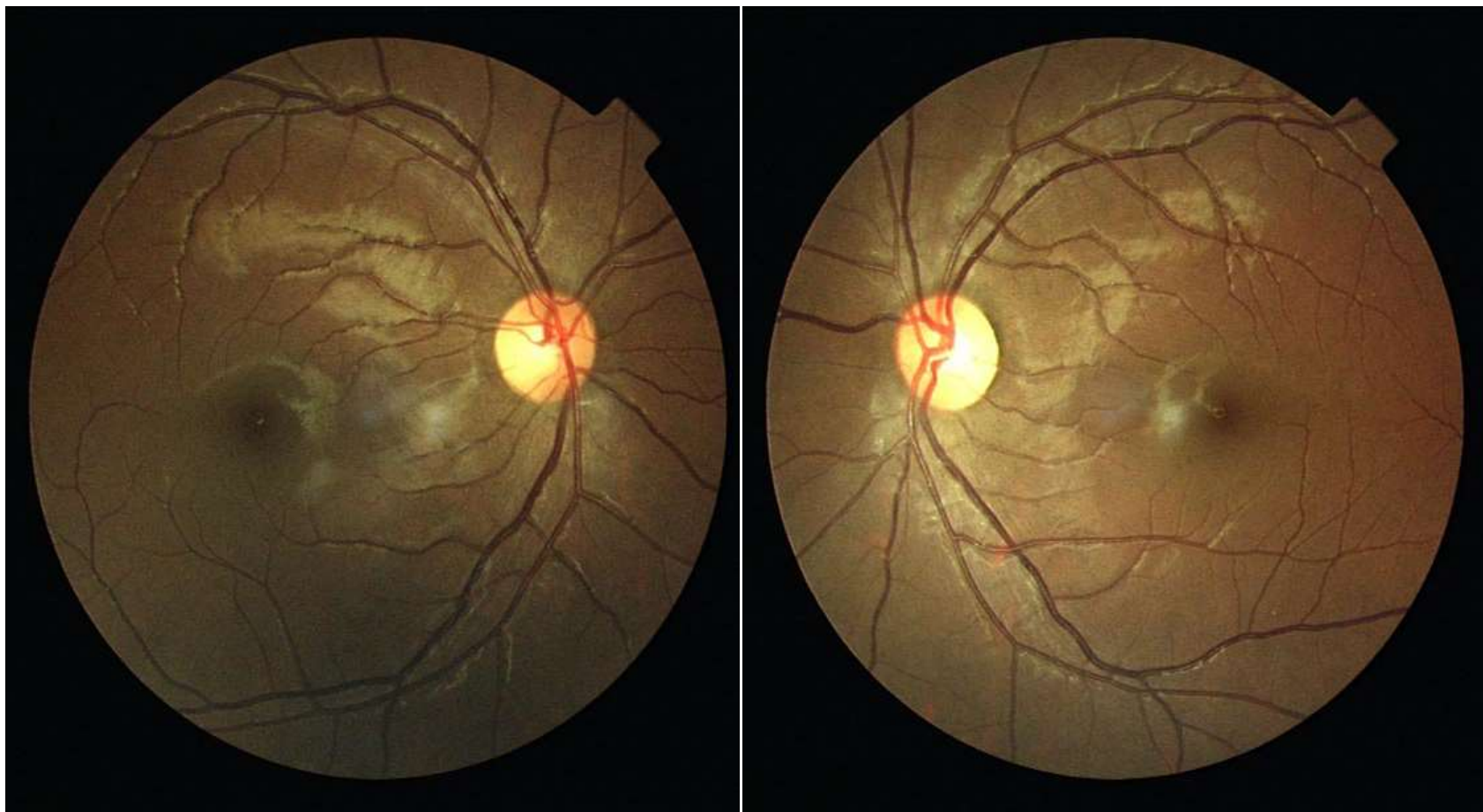
IOP Not done

EXTERNAL EYE EXAMINATION see attached

KERATOMETRY Not done

COLOUR VISION Can follow "pathways" correctly on Ishihara test

Fundus Image



External Eyes



R13